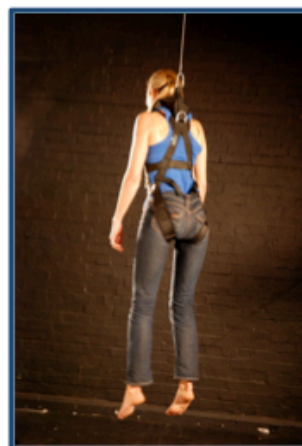
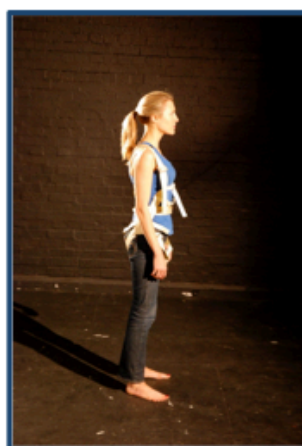
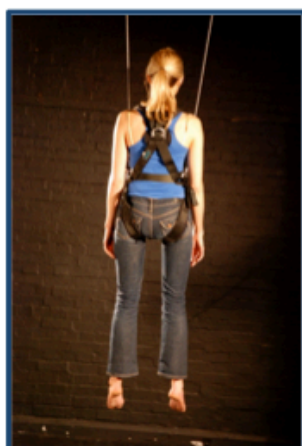


Full body harnesses are extremely versatile having multiple hard and soft attachment points. They are available in sizes to fit the smallest child right up to the largest of adult performers. Black or white webbing as standard with other colours available to order.



They can be used with either a single or with two (or more) cables. Traditionally they were used in conjunction with the pendulum machines; a single cable attaching to a pick point between the shoulder blades. The modern version that was originally developed for stunt work has two additional metal pick points on the hips and various webbing loops generally used for positioning. A soft pick high up behind the neck is often used to allow a more realistic body position for hanging effects.



When flying on a single wire there is a tendency to spin around due to slight stretch and the spiral construction of the wire rope. This can be lessened by use of swivels or eliminated completely by either the use of a lateral tether or in the case of Peter Pan's nursery scene, (where we often fly the 2 boys on single wires) by the artistes holding hands.

telephone

+44 (0)20 8723 8552
+44 (0)7958 285608

address

8 Greenford Avenue, Hanwell,
London, W7 3QP, United Kingdom.

e-mail/web

mail@afxuk.com
www.afxuk.com